

14257-SMT parts screw torquing precautions - Slotted and Hex driving means  
Steel screws (75C version) and Aluminum screws (90C versions)



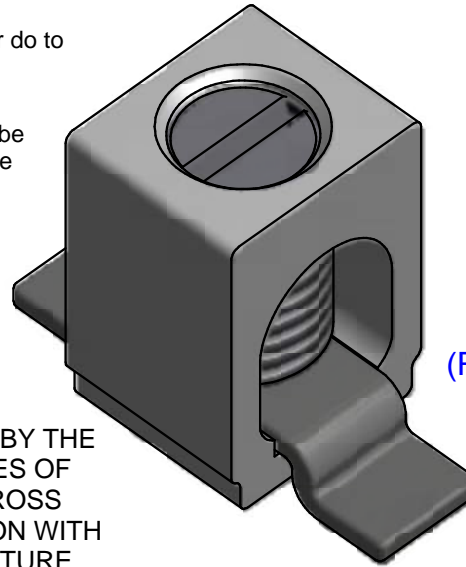
When torquing the wire binding screw to the proper amount for the size of wire, all SMT versions using the 14257-SMT staple bus must be protected against lateral forces ( 90 degrees to the axis of the staple length) when driving the screw which is the weaker plane for the SMT soldered connection to the PCB (the narrow plane of the staple).

Tearing detachment of the SMT soldered joint can occur do to its inherent weakness in that plane.

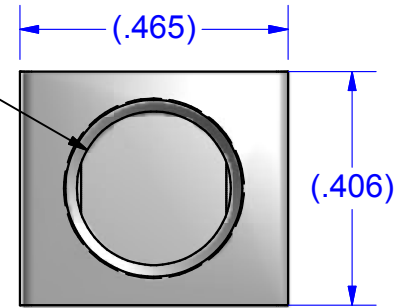
A universal jointed bit holder, universal joint coupling or universal "wobble" ended extension driver must always be used to apply pure rotational torque and no lateral torque moments.

SEE ALSO IHI GUIDE TO SMT COMPONENTS BEFORE USING SMT COMPONENTS IN DESIGNS

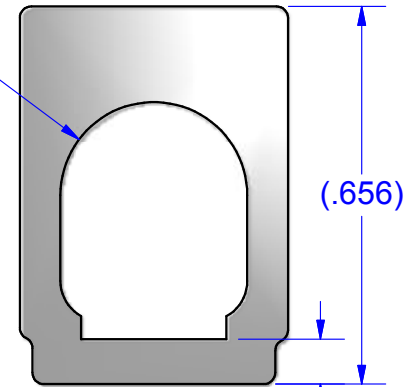
**CONDITIONS OF ACCEPTABILITY** ARE NOMINALLY PROVIDED BY THE TURN PREVENT STAPLES OF MINIMUM REQUIRED CROSS SECTION IN CONJUNCTION WITH ADEQUATE PCB STRUCTURE.



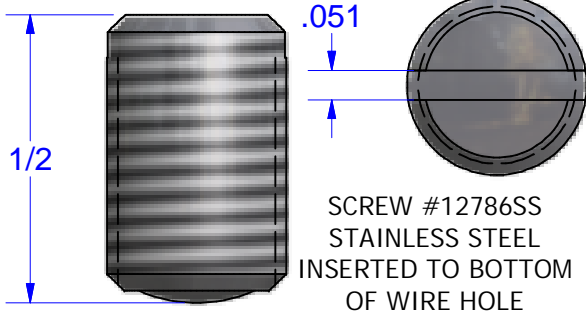
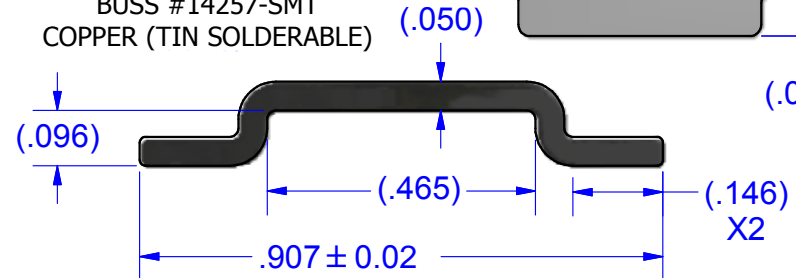
5/16-24 UNF - 2B



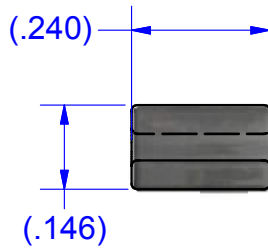
CONNECTOR #B2C  
ALUMINUM (TIN PLATED)



BUSS #14257-SMT  
COPPER (TIN SOLDERABLE)

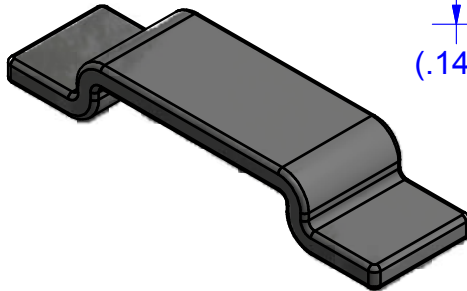


SCREW #12786SS  
STAINLESS STEEL  
INSERTED TO BOTTOM  
OF WIRE HOLE



**PARTS MARKED**

- B2C
- IHI LOGO
- CSA LOGO
- UL REGOGNITION LOGO
- 2-14CU7
- 2-8AL7



NOT FOR USE WHERE FAILURE CREATES A HAZARD TO HUMAN HEALTH OR SAFETY. ALL PRODUCTS ARE SUBJECT TO THIS FULL DISCLAIMER: <http://www.ihconnectors.com/disclaimer.html>  
FOR FURTHER INFORMATION ON THE PROPER USE OF THIS PRODUCT IN SPECIFIC APPLICATIONS SEE [ihconnectors.com/GuideToFlexFlexibleFineStrandedWireCableMechanicalLugsFAQ.html](http://ihconnectors.com/GuideToFlexFlexibleFineStrandedWireCableMechanicalLugsFAQ.html)  
[ihconnectors.com/Precautions-when-using-SMT.pdf](http://ihconnectors.com/Precautions-when-using-SMT.pdf)  
[ihconnectors.com/FAQ\\_SMT\\_SMD\\_High\\_CurrentPCB\\_Terminal\\_LugsSolderCreep.htm](http://ihconnectors.com/FAQ_SMT_SMD_High_CurrentPCB_Terminal_LugsSolderCreep.htm)  
[ihconnectors.com/NOTESonPCBFootPrintLayouts\(SMT-SMD-Mode\).pdf](http://ihconnectors.com/NOTESonPCBFootPrintLayouts(SMT-SMD-Mode).pdf)  
[ihconnectors.com/High\\_Amp\\_Wide\\_Trace\\_PCB\\_Wire\\_Connection.html](http://ihconnectors.com/High_Amp_Wide_Trace_PCB_Wire_Connection.html)  
[ihconnectors.com/Technical-Data-Installation.htm](http://ihconnectors.com/Technical-Data-Installation.htm)

THIS DRAWING AND DESIGN ARE THE PROPERTY OF INTERNATIONAL HYDRAULICS, INC., CLEVELAND, OHIO, AND MAY NOT BE DUPLICATED, USED FOR THE BASIS OF DESIGN OR MANUFACTURE WITHOUT THE WRITTEN PERMISSION OF INTERNATIONAL HYDRAULICS, INC., CLEVELAND, OHIO.

INTERNATIONAL HYDRAULICS, INC.

**GENERAL TOLERANCES**  
±.015 (±0,038mm)

TITLE:  
**Connector + Bus for PCB Mount**  
**ASSEMBLED CONNECTOR**

MATERIAL:  
**SEE ABOVE**

SIZE: DWG NO.: B2C-PCB-STM-SS (SALES) REV: 1

FINISH:

DATE: 6/29/09 11/19/14 THIS IS A CAD DRAWING, DO NOT MANUALLY REVISE